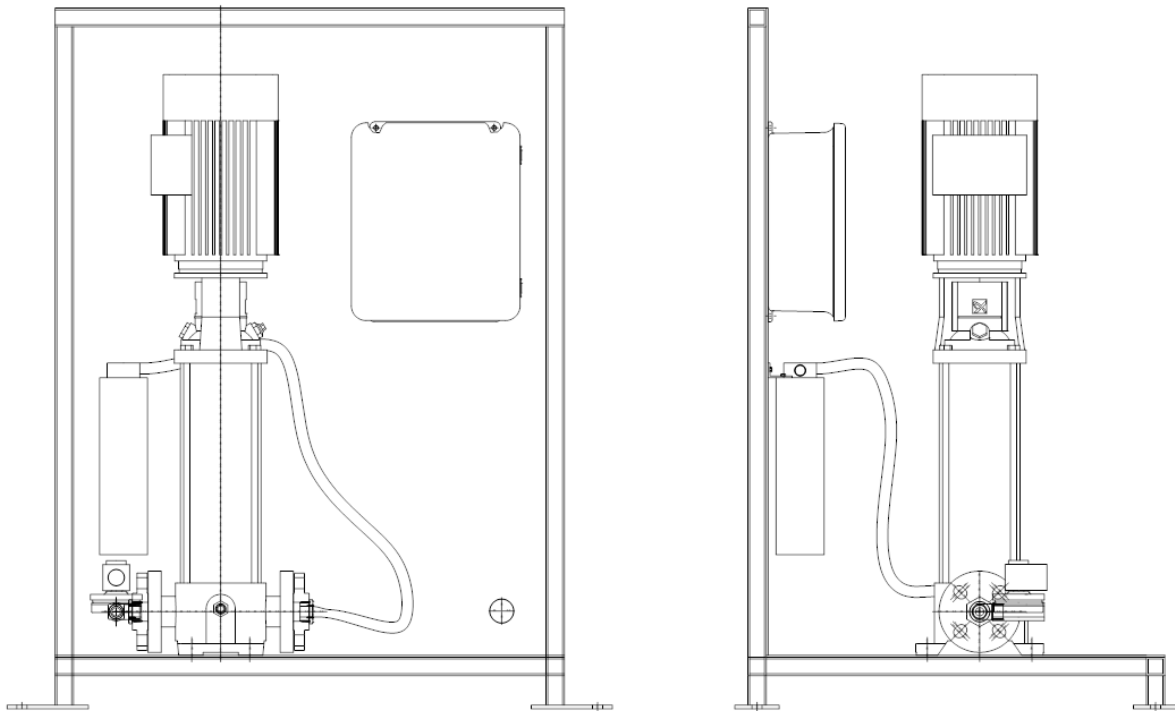


Operation & Maintenance Manual

Backflush System (BFS)



Vincent Corporation

2810 East 5th Avenue

Tampa, FL 33605-5638

www.vincentcorp.com

vincent@vincentcorp.com

This page intentionally left blank.

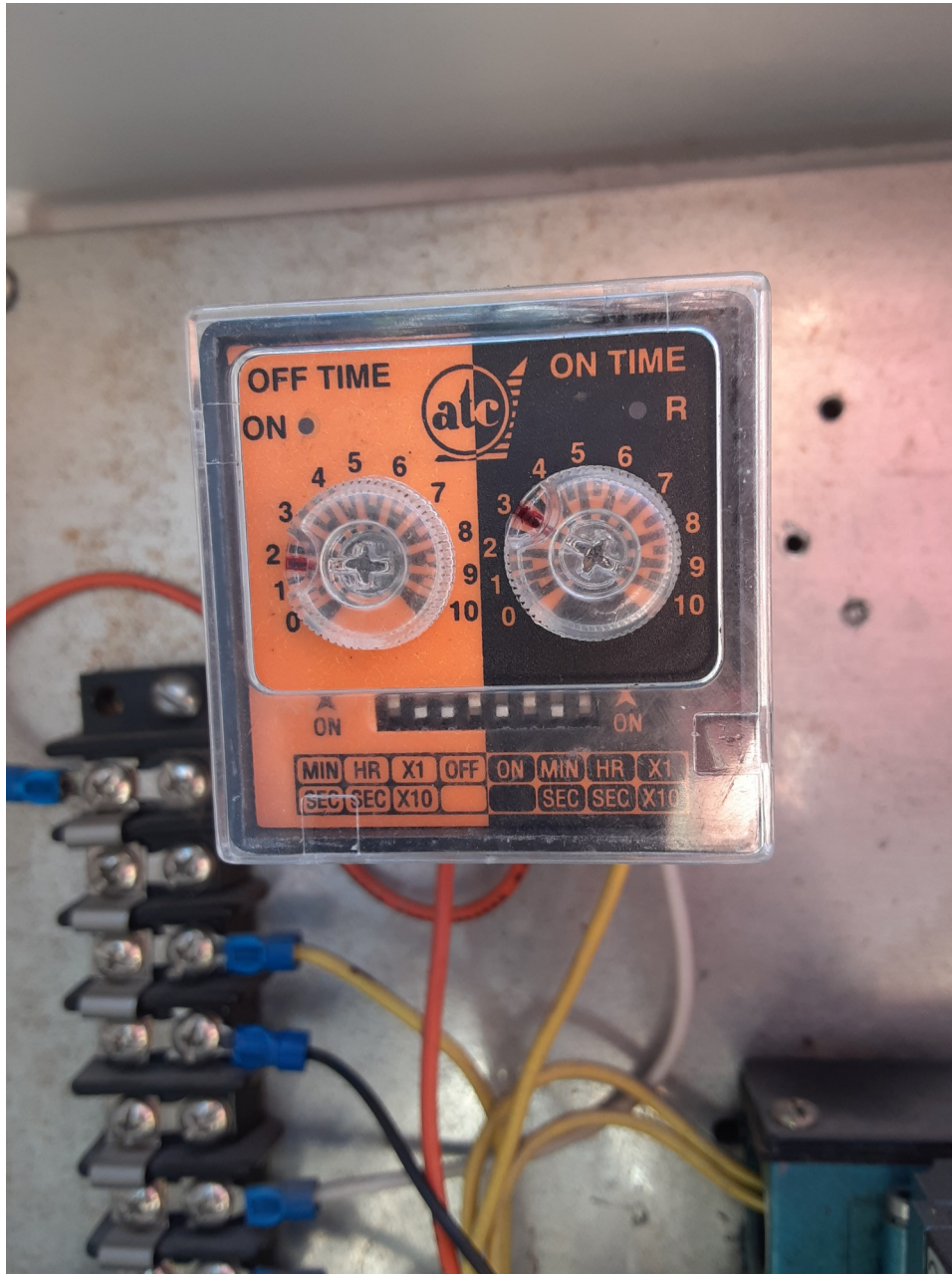
Contents

Automatic Backwash Settings	4
ATC Timers	4
Flow Control Valves	5
Setup	5
Fiber Filter Installation Drawing	6

Automatic Backwash Settings

ATC Timers

There are two timers provided. The left timer sets the interval between wash cycles. The right timer sets the duration of the wash cycle. The duration timer should be set to run the pump long enough for a full stroke of the cylinder from its resting position. The pump will shut off while the cylinder is returning to its resting position. Additional setup information is provided later in this manual.



Flow Control Valves

The air cylinder(s) control(s) the stroke of the internal spray ring(s). Each air cylinder has a flow control valve at each end. These valves control the amount of time that the cylinder will take to make a stroke in either direction.



The backflush pump only sprays while the cylinder is moving *from* its resting position until the spray rings have traveled an entire stroke. The pump does not spray when the cylinder is returning *to* its resting position. The duration timer should be set to match the travel time of the full stroke from its resting position.

Setup

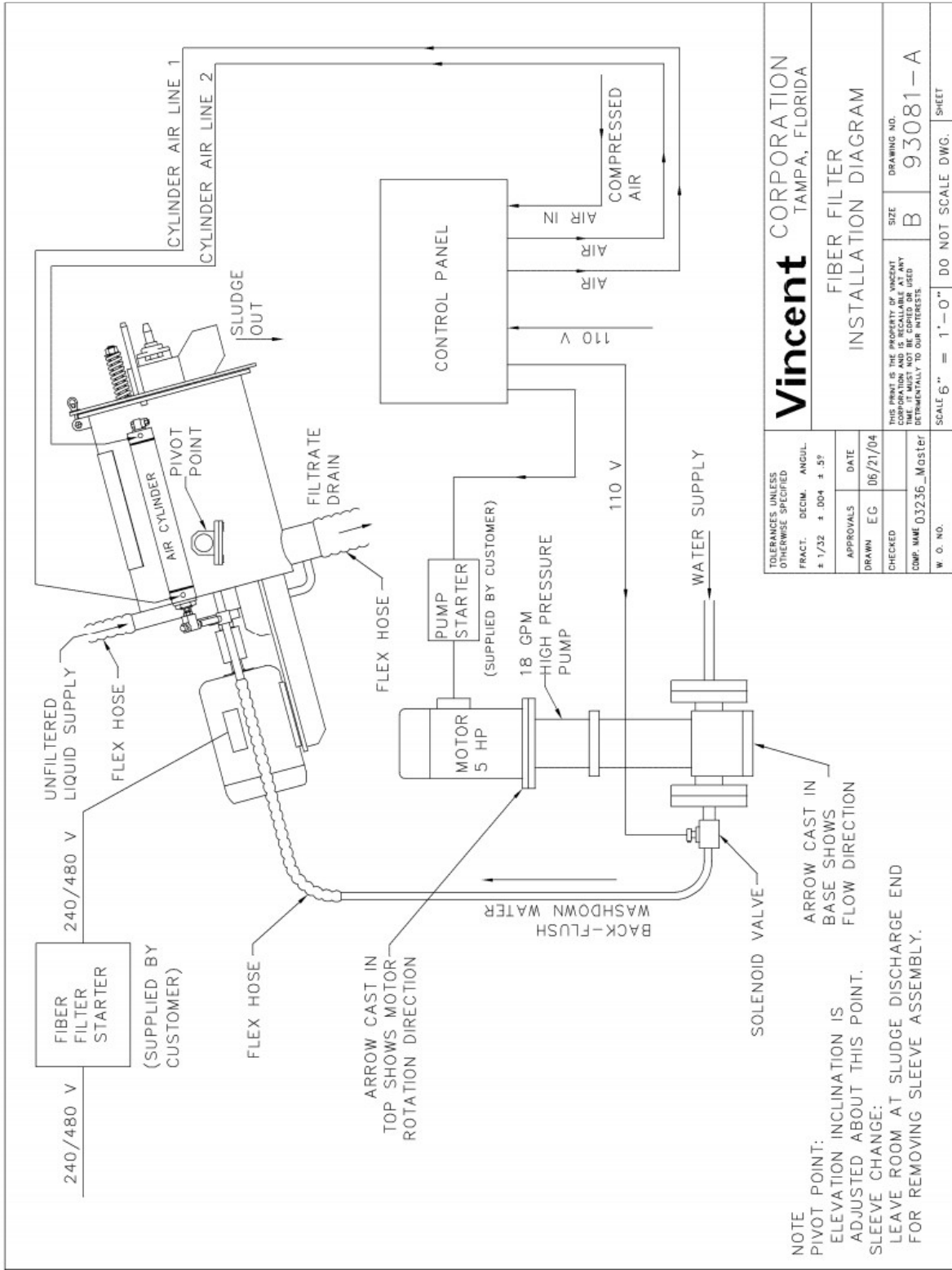
As a general rule, if the sludge discharge from the Fiber Filter becomes increasingly wetter it likely indicates that there is sleeve blinding.

Setup is done for each application. Set a stop watch and start running the Fiber Filter. When the sludge discharge becomes too dilute, record the time. Set the interval for a time period less than this.

Observe the wash system running to determine the adjustments required to bring the Fiber Filter back to normal flow. If the pump shuts off before the cylinder has completed a full stroke from its resting position, increase the setting on the duration timer.

If the stroke is too slow or too fast for adequate backflushing, adjust the flow control valves on the air cylinders to complete the stroke in the desired time. You will need to readjust the duration timer to match.

Determining the proper settings is an iterative process. Repeat until you're comfortable with adequate cleaning and minimum water usage.



Vincent CORPORATION TAMPA, FLORIDA	
FIBER FILTER INSTALLATION DIAGRAM	
THIS PRINT IS THE PROPERTY OF VINCENT CORPORATION AND IS RECALLABLE AT ANY TIME. IT MUST NOT BE EDITED OR USED DETRIMENTALLY TO OUR INTERESTS.	DRAWING NO. B 93081-A
W. O. NO.	SCALE 6" = 1'-0" DO NOT SCALE DWG. SHEET
TOLERANCES UNLESS OTHERWISE SPECIFIED FRACT. DECIM. ANGUL. ± 1/32 ± .004 ± .5°	APPROVALS DRAWN EG 06/21/04
CHECKED COMP. NAME 03236_Moster	DATE 06/21/04